



JANE ROSEN

RED (RUFIOUS)

28 JUNE—
4 AUGUST 2017

JANE ROSEN

RED (RUFIOUS)

TAYLOE PIGGOTT GALLERY

62 SOUTH GLENWOOD STREET
JACKSON HOLE WYOMING
TEL 307 733 0555
TAYLOEPIGGOTTGALLERY.COM



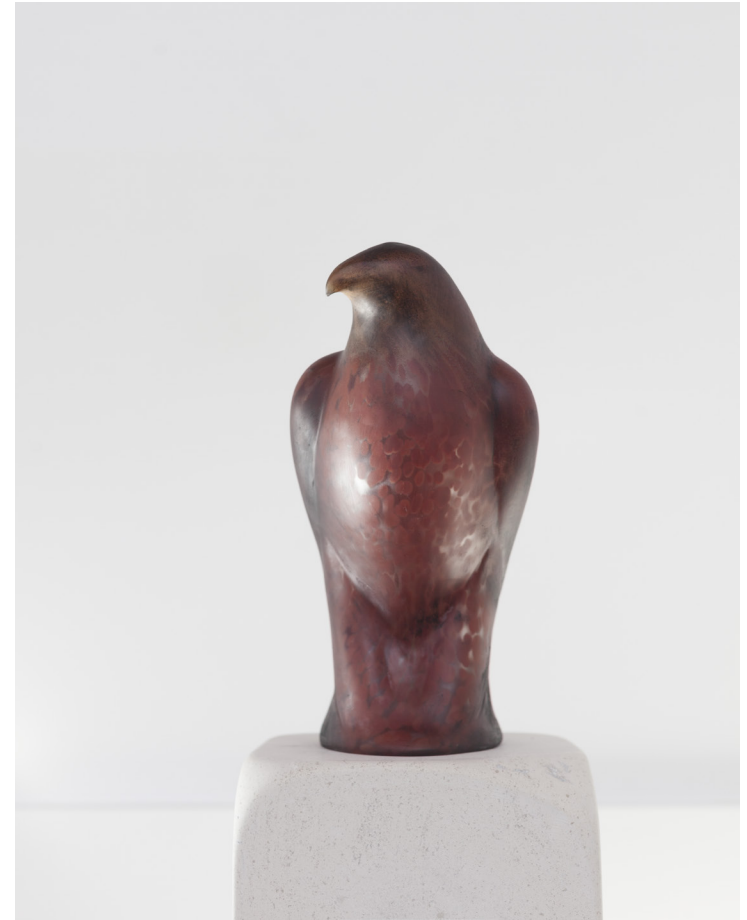
SAND TO STONE

I had been given a grant by the Portuguese government to work outside and use their marble, and in doing so outdoors, I learned that the sun would tell me how to carve. I had lived in New York City my whole life but after that trip I went to visit my brother in California and the landscape reminded me of Portugal. At the age of 40, I moved from a loft in downtown Manhattan to a place that is so rural that my closest neighbors were many acres away. I had no idea whatsoever about how to live in the landscape with the animals, to live where time was slow. Evolution for me was shifting from living in domestic time to living in landscape time.

Living close to nature and working outside started my evolution as a sculptor. Who I was has completely changed by living in California. First of all, I am more aware of what surrounds me. I am more interested in perception rather than cognition, and I am more interested in taking an impression rather than trying to make an impression. When the birds sit in the trees in the light of late afternoon, they glow. They have this inner light, and the medium of glass with stone is fantastic for capturing it. There's a posture in animals and in the light and the forms of nature, that gives rise to a presence. I wish for people to feel that presence, to know that it brings a quiet. Art is transformative, it can change people.

The sand has been turned to stone, the glass has come from molten sand and the stone has been reformed and recycled. All of these things are an alchemical evolution of materials. Life imitating art imitating life. "There is something ancient in my work, if you slow down and look at it."

Excerpt from
Finesse Magazine
Evolution Issue
TKRG.COM



RUFOUS BIRD (detail), 2015
Hand Blown Pigmented Glass on Limestone
57 1/2 × 8 × 10 inches

MORANDI BALZAC TABLE, 2016
Hand Blown Pigmented Glass and Limestone
33 × 16 × 14 inches



RED MARBLE HAWK, 2015
Portuguese Marble and Limestone
63 × 8 × 12 inches





SANDMAN, 2017
Limestone and Pigment
70 × 8 × 12 inches





MANTLE/DISMANTLE, 2016
Chalk, Casein, Charcoal, and Ink
36 × 42 inches



CINNAMON BIRD (detail), 2015
Hand Blown Pigmented Glass on Limestone
61 × 8 × 12 inches



BRAIDED GOSHAWK WALL BIRD, 2015
Hand Blown Pigmented Glass
17 1/2 × 5 1/2 × 4 inches





GRAY WOLF, AP 2, 2012
Archival Pigment Print
on German Etching
42 × 52 inches



ROOK BUDDHI, 2013
Hand Blown Pigmented Glass and Marble
19 × 5 × 4 inches



BRONZE BUDDHI II, ed. of 6, 2016
Cast Bronze with Unique Patina
18 × 5 × 4 inches



BLUE CASH CUT OUT, 2016
Unique Patina Bronze and Limestone
15 x 31 1/2 x 4 1/2 inches



DOMESTIC TIME, 2016
 Unique Patina Bronze and Limestone
 15 × 31 1/2 × 4 1/2 inches



LANDSCAPE TIME, 2016
 Unique Patina Bronze and Limestone
 15 × 31 1/2 × 4 1/2 inches



Acknowledgments:

Thank you to Alexander Rohrig, Ross Richmond and Gustavo Gutierrez for their assistance and artistry to allow this body of work to come alive, along with photography credits by Scotty McDonald and Laurie Frankel.

-Jane Rosen

Published on the occasion of the exhibition

JANE ROSEN *Red (Rufous)*
28 June - 4 August 2017

TAYLOE PIGGOTT GALLERY
62 South Glenwood Street
Jackson Wyoming
Tel 307 733 0555
tayloepiggottgallery.com

© 2017 All Rights Reserved.



TAYLOE PIGGOTT GALLERY

62 SOUTH GLENWOOD STREET
JACKSON HOLE WYOMING
TEL 307 733 0555
TAYLOEPIGGOTTGALLERY.COM